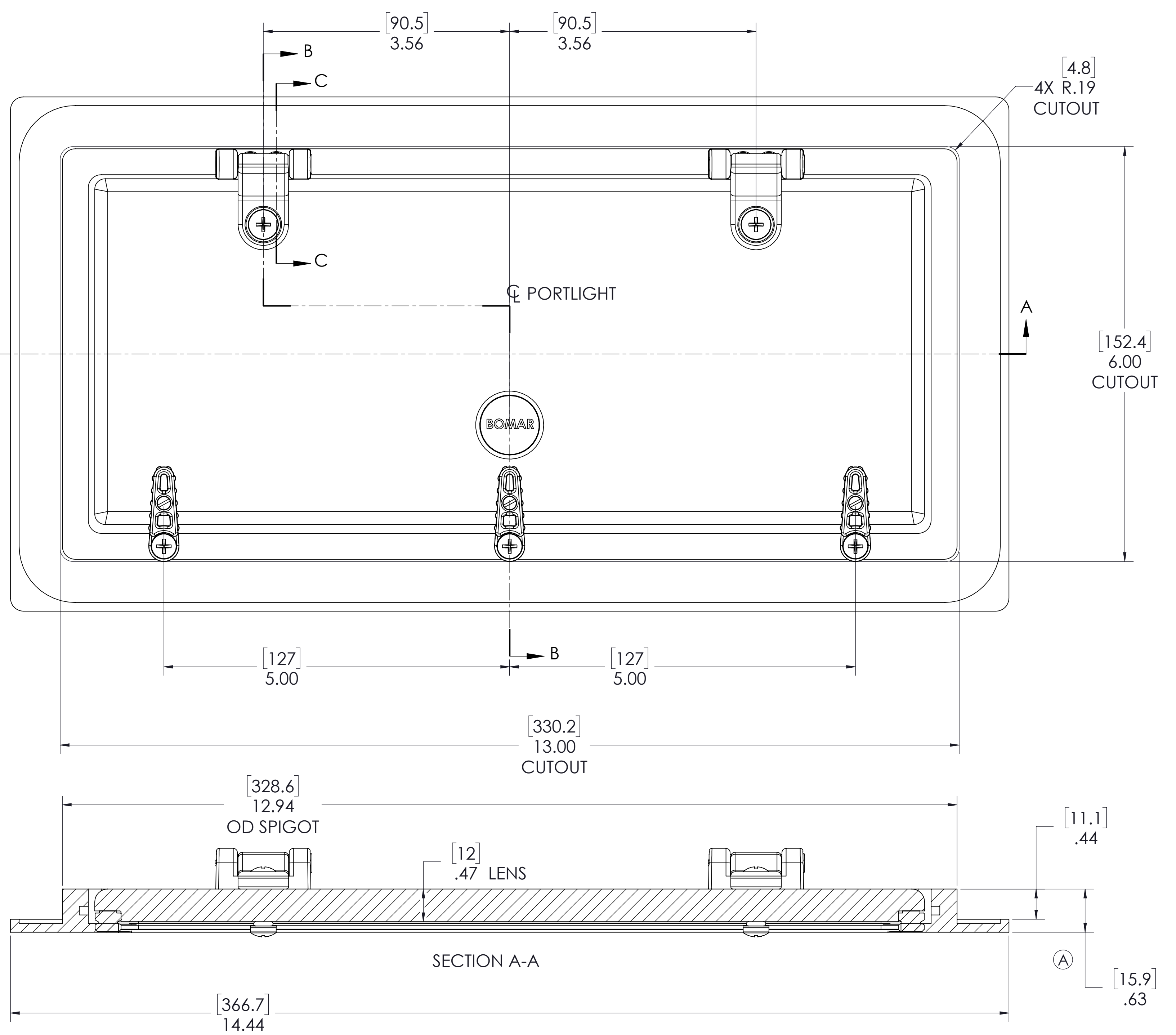
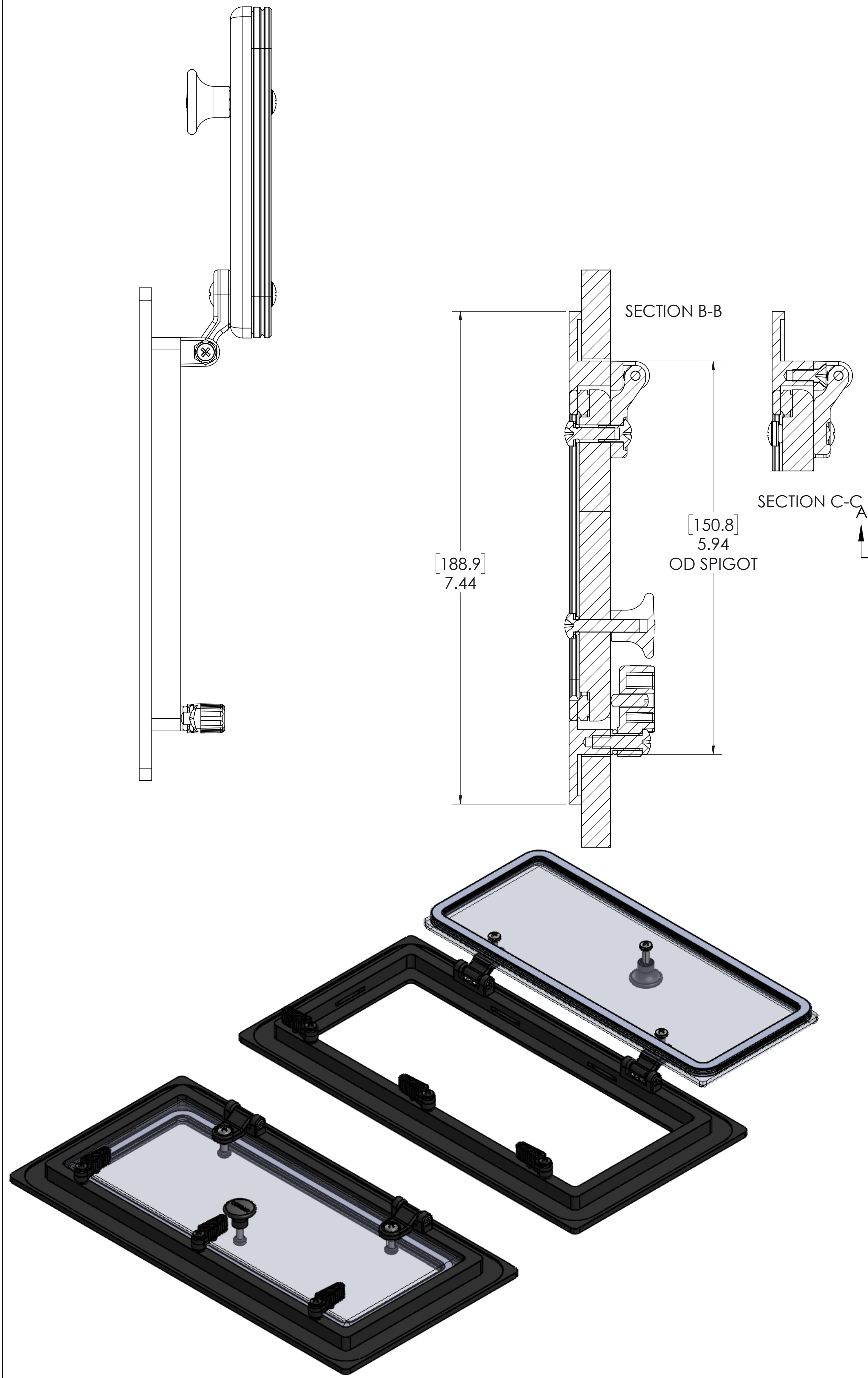


REVISIONS				
ZONE	REV.	DESCRIPTION	DATE	APPROVED
	A	.38 PLATE THK WAS .62	12/16/2011	JPERRY



<small>THIS DRAWING IS THE PROPERTY OF POMANETTE, LLC. CHARLESTOWN, N.H. ALL RIGHTS ARE RESERVED. THIS DRAWING AND INFORMATION MAY NOT BE COPIED OR DISCLOSED TO OTHERS WITHOUT WRITTEN PERMISSION OF POMANETTE, LLC.</small>				<small>DIV. OF Pompanette INC. 73 SOUTHWEST ST. PO BOX 1200 CHARLESTOWN, N.H. 03033 PH: (603) 836-5761 FAX: (603) 836-5074</small>	
SCALE: ±1/64	TITLE: PORTLIGHT OPENING				
FINISH: .XXX ±.005	ALUMINUM & ACRYLIC	DESIGNER: JPERRY	1 OF 1		
TOLERANCE: .XX ±.01	SCALE: 1:1	DATE: 11/17/11	PART NO: NO--0003-W-LS		